



REF: # 8933

ALICANTE (SAN JUAN)



#### INFO

|                     |                     |
|---------------------|---------------------|
| PRECIO:             | 1.390.000 €         |
| TIPO:               | Villa               |
| CIUDAD:             | Alicante (San Juan) |
| HABITACIONES:       | 4                   |
| Baños:              | 4                   |
| Construidos ( m2 ): | 549                 |
| Parcela ( m2 ):     | 402                 |
| Terraza ( m2 ):     | 94                  |
| Años:               | -                   |
| Planta:             | -                   |
| MENSAJE             | -                   |



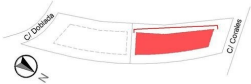
#### DESCRIPCION

Luxury homes with private pool in the location of the former Hotel SIDI San Juan from €1.390.000 SiDi Villas by TM is a unique residential where you can enjoy all the intimacy and privacy of a private home even though you're very close to the beachfront. The sought-after location of this complex on the seafront of San Juan Beach and Cabo Huertas makes this new project from TM Real Estate Group a highly popular site, formerly the home of the famous SIDI hotel, from which it takes its name. The architectural design was conceived to integrate the greenspace of its extensive gardens into the golden sands and blue-green waters of this section of the Mediterranean. This phase of the project includes 2 detached homes of 3/4 bedrooms in a private plot with swimming pool and garden, and basement garage. The 2 villas enjoy beautiful seaviews and excellent high quality finishes that you can customize to your preferences. The homes are also designed to maximize comfort and privacy. Delivery: 15 June 2022 This phase of the project includes 2 villas of 3/4 bedrooms in a private plot with swimming pool and garden. The homes are designed to maximize comfort and privacy. The villas

have elevator for access to all floors, storage room and garage for 3 cars on the basement. They enjoy Premium finishes as well as alarm preinstallation and security cameras.



|  |  |   |   |
|--|--|---|---|
| <b>ESTILO</b>  | <b>VISTAS</b>  | <b>AIRE ACONDICIONADO</b>   | <b>DISTANCIA A :</b>  |
| <ul style="list-style-type: none"><li>Moderno</li></ul>  | <ul style="list-style-type: none"><li>Panoramico</li><li>Vistas al mar</li></ul> | <ul style="list-style-type: none"><li>Central</li></ul>   | Playa : 100 m   |
|  |  |   | Aeropuerto: 10 Km   |
|  |  |   | Ciudad : 500 m  |
| <b>PARKING NO. DE COCHES</b>   | <b>SUELO</b>   | <b>COCINA</b>   | <b>JARDÍN Y TERRAZAS</b>  |
| Garage no. de coches : 1   | <ul style="list-style-type: none"><li>Azulejos</li></ul>                         | <ul style="list-style-type: none"><li>Cocina abierta</li><li>Cocina cerrada</li><li>Cocina equipada</li></ul> | <ul style="list-style-type: none"><li>Terraza cubierta</li><li>Terraza abierta</li><li>Luces exteriores</li><li>Riego automatico</li><li>Arboles frutales</li><li>Palmeras</li><li>Parque infantil</li><li>Jardín privado</li></ul> |
| : 5  |  |   |   |
|  |  |   |   |
| <b>EXTRA</b>   |  |   |   |
| <ul style="list-style-type: none"><li>Armarios empotrados</li><li>Alarma</li><li>Puerta de seguridad</li><li>Doble cristal</li><li>Videocamara en puerta</li><li>Satellite TV</li><li>Guardia de seguridad</li><li>Video vigilancia</li><li>Trastero</li><li>Lavanderia</li><li>Internet</li></ul> |  |   |   |



TIPO A  
Alzado oeste  
West elevation  
Вид на запад

Plano sujeto a posibles modificaciones por razones o exigencias de índole técnica o jurídica. Las superficies son aproximadas.  
Plano subject to possible modifications for technical or legal reasons. Measurements shown are approximate.  
План с учетом возможных изменений по причинам технического либо юридического характера.

Septiembre - September - сентябрь 2019







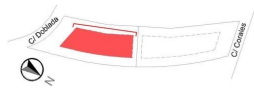












TIPO B  
Alzado oeste  
West elevation  
Вид на запад

Plano sujeto a posibles modificaciones por razones o exigencias de índole técnica o jurídica. Las superficies son aproximadas.  
Plans subject to possible modifications for technical or legal reasons. Measurements shown are approximate.  
План с учетом возможных изменений по техническим или юридическим требованиям. Площади указаны ориентировочно.

Noviembre - November - Ноябрь 2020







LETTER PLANE

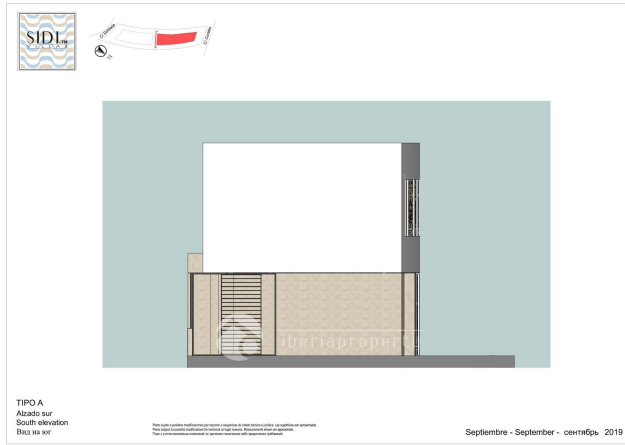
3 Bedrooms Unifamiliar A Façade



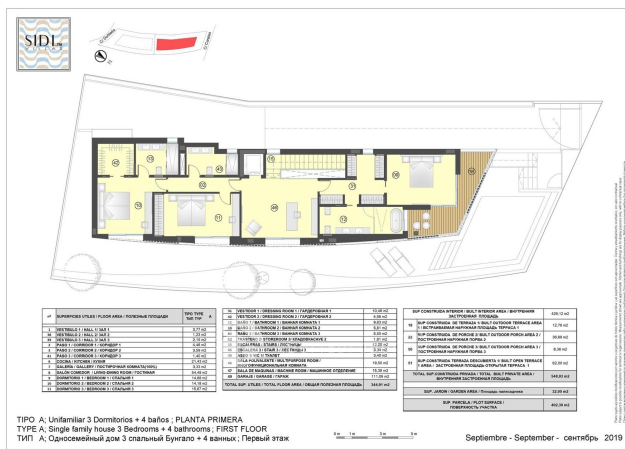
3 Bedrooms Unifamiliar A Façade



### 3 Bedrooms Unifamiliar A Façade

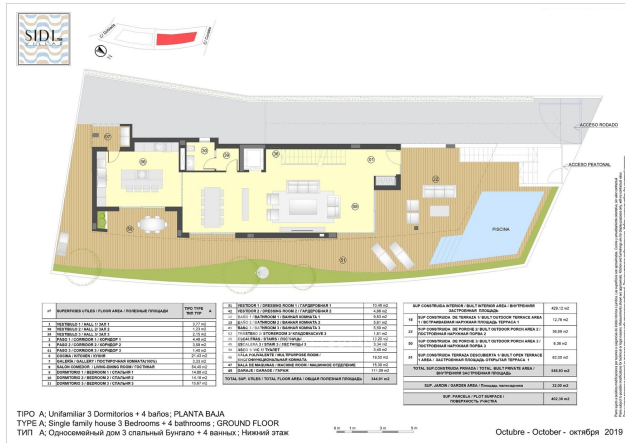


### 3 Bedrooms Unifamiliar A Floor

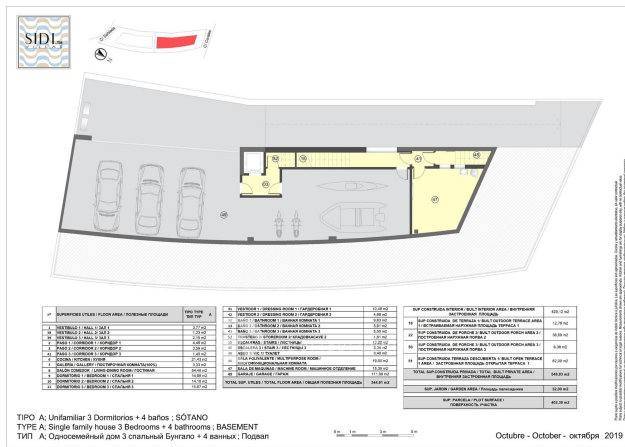




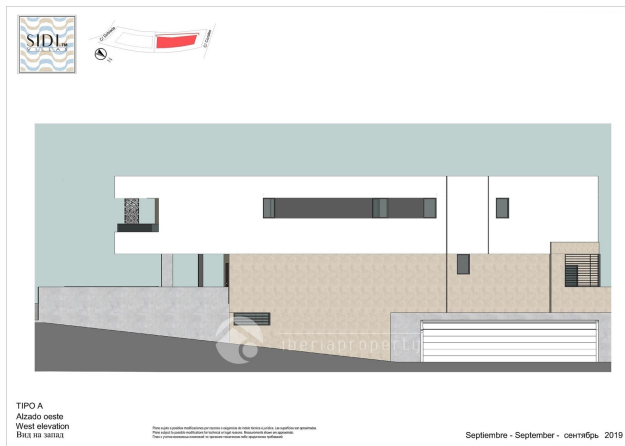
### 3 Bedrooms Unifamiliar A Ground Floor



### 3 Bedrooms Unifamiliar A Basement Floor



3 Bedrooms Unifamiliar A Façade



**"OUR EXPERIENCE IS YOUR GUARANTEE"**