



REF: # 7210

QUESADA-ROJALES (LA FINCA GOLF)



INFO

PRECIO: 340.000 €

TIPO: Villa

CIUDAD: Quesada-Rojales (La Finca Golf)

HABITACIONES: 3

Baños: 3

Construidos (m2): 118

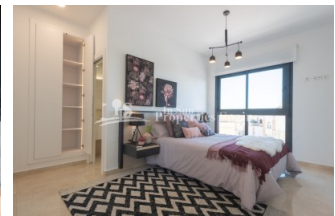
Parcela (m2): 365

Terraza (m2): 62

Años:

Planta: -

MENSAJE -



DESCRIPCION

Located in Algorfa (Alicante) next to the golf course "LA FINCA" is this luxury new development of 14 individual villas with private pools, parking, garage (depending on model), garden, terraces and with one bedroom and a bathroom on the ground floor. They are located in a privileged, quiet environment close to all services and close to the pine forests and beaches of Guardamar. This is a Villa of 118m2 with 3 bedrooms, 2 bathrooms, an area of 365m2, 12m2 of terrace, 50m2 solarium, 67'30m2 garage and parking. The Kitchens are furnished and complete with Silestone worktop and both bathrooms have under floor heating. La Finca golf course opened its doors in August 2002. This magnificent golf course was designed by the renowned Spanish designer Pepe Gancedo, who was one of the standout amateur players in Spain. Algorfa lies on the banks on the River Segura with a beautiful mountainous backdrop and wonderful panoramic views to the coast. It is one of Vega Baja's citrus farming villages. The village is a short drive from the wonderful beaches of the Costa Blanca, and is less than 1 hour from Alicante Airport. The area is relaxed, friendly with a typically laid-back Spanish

way of life. In Algorfa you are close to fabulous blue flag beaches and nature reserves. Yet just a 20 minute drive away you have the facilities and expat residents of Torrevieja. Algorfa holds a market on Sundays. Local shops provide daily needs and further shopping is available in nearby Torrevieja and Orihuela.



ESTILO <ul style="list-style-type: none">• Moderno• Contemporaneo	VISTAS <ul style="list-style-type: none">• Panoramico• Vistas a la montaña	DISTANCIA A : <div>Playa : +10 Km</div> <div>Aeropuerto: 50 Km</div> <div>Ciudad : 3 Km</div>	ORIENTACION <div>Sur East West</div>
AMUEBLADO <ul style="list-style-type: none">• Sin amueblar	PARKING NO. DE COCHES <div>: 1</div>	SUELO <ul style="list-style-type: none">• Azulejos• Piedra	COCINA <ul style="list-style-type: none">• Cocina abierta• Cocina equipada
JARDÍN Y TERRAZAS <ul style="list-style-type: none">• Terraza abierta• Paisajista• Jardín privado	CALEFACION <ul style="list-style-type: none">• Calefacion en baños	EXTRA <ul style="list-style-type: none">• Armarios empotrados• Puerta de seguridad• Doble cristal	





















"OUR EXPERIENCE IS YOUR GUARANTEE"