



REF: # 7148

CALPE/MORAIRA (MORAIRA CENTRO)



INFO

PRECIO:	1.450.000 €
TIPO:	Villa
CIUDAD:	Calpe/Moraira (Moraira centro)
HABITACIONES:	4
Baños:	5
Construidos (m2):	411
Parcela (m2):	922
Terraza (m2):	48
Años:	
Planta:	3
MENSAJE	1.225.000 €



DESCRIPCION

New luxury Villa offering sea views and pleasant open views towards Moraira, very well located in a quiet neighbourhood just 2.5 km from the beaches and the centre. This lovely and modern Villa consists in the underground floor of 1 bedroom, ensuite bathroom, guest toilet, kitchen and spacious lounge which leads to the covered terraces leading to the pool area and the surrounding 48m2 terrace on the main living area. Internal staircases lead to the first floor where there are 3 double bedrooms each with its own bathroom and two open terraces with a total of both of 22m2. In the semi-basement there is a large garage of 44m2 and outside there is a carport and plenty of space to park several vehicles. EXTRAS: Technal carpentry with safety glass, complete kitchen with Siemens electrical appliances, complete Roca brand bathrooms and taps, LED lighting, aerothermal system for hot water and underfloor heating, air conditioning through ducts (cold and hot) throughout the house, solar panels, built-in wardrobes, electric blinds, internal alarm, pre-installation of external alarm and security cameras. Rectangular overflowing pool EXTRAS: technal carpentry with safety glass, complete kitchen with Siemens electrical appliances, complete Roca brand

bathrooms and taps, LED lighting, aerothermal system for hot water and underfloor heating, air conditioning by ducts (cold and heat) throughout the house, solar panels, built-in wardrobes, electric blinds, interior alarm, pre-installation of external alarm and security cameras. Rectangular overflowing swimming pool of 12x4,5 meters, barbecue area of 22m2, laundry, completed garden. Automatic gates. Energy classification A. South-facing



ESTILO	AIRE ACONDICIONADO	DISTANCIA A :	ORIENTACION
<ul style="list-style-type: none">Moderno	<ul style="list-style-type: none">Central	Playa : 2 Km Aeropuerto: 70 Km Ciudad : 1 Km	Sur
AMUEBLADO	PARKING NO. DE COCHES	AREAS	SUELO
<ul style="list-style-type: none">Sin amueblar	Garage no. de coches : 1 : 2	<ul style="list-style-type: none">Baño en dormitorio	<ul style="list-style-type: none">Azulejos
COCINA	JARDÍN Y TERRAZAS	CALEFACION	EXTRA
<ul style="list-style-type: none">Cocina abiertaCocina equipada	<ul style="list-style-type: none">Terraza cubiertaTerraza abiertaLuces exterioresRiego automaticoArboles frutalesPalmerasPaisajistaValladoMuros de piedraPuerta electricaBBQ/grill	<ul style="list-style-type: none">Gas centralCalefacion en el sueloCalefacion en baños	<ul style="list-style-type: none">Armarios empotradosAlarmaPuerta de seguridadDoble cristalTrasteroLavanderia

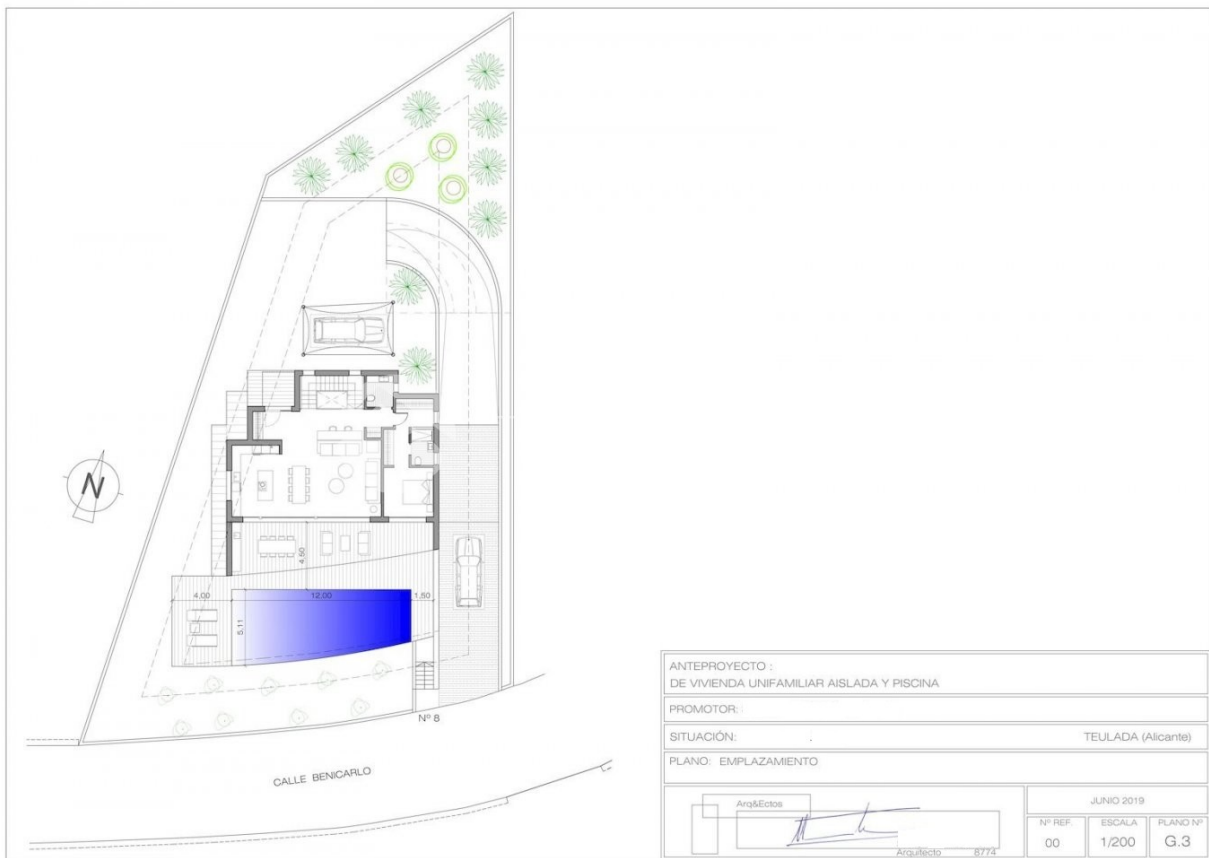


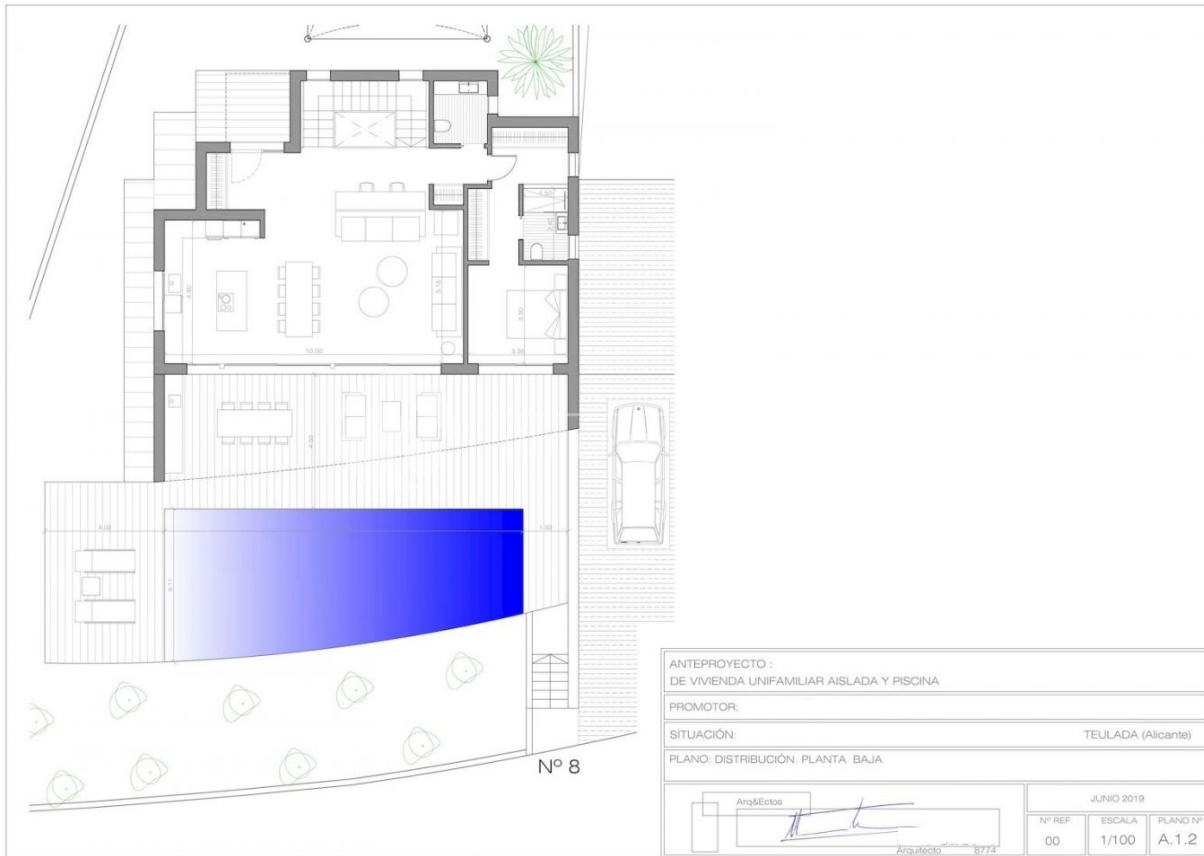


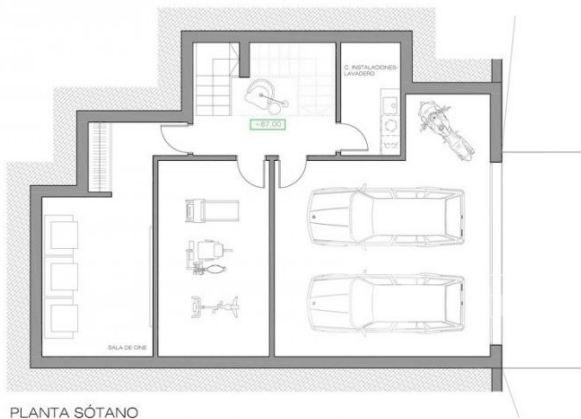












PROYECTO BÁSICO : DE VIVIENDA UNIFAMILIAR AISLADA Y PISCINA								
PROMOTOR:								
SITUACIÓN:		TEULADA (Alicante)						
PLANO: DISTRIBUCIÓN. PLANTA SÓTANO								
<div>Arq&Ectos</div> <div></div> <div>Arquitecto 8774</div>		<div>JULIO 2019</div> <table><tr><td>Nº REF.</td><td>ESCALA</td><td>PLANO Nº</td></tr><tr><td>338</td><td>1/100</td><td>A.1.1</td></tr></table>	Nº REF.	ESCALA	PLANO Nº	338	1/100	A.1.1
Nº REF.	ESCALA	PLANO Nº						
338	1/100	A.1.1						

"OUR EXPERIENCE IS YOUR GUARANTEE"