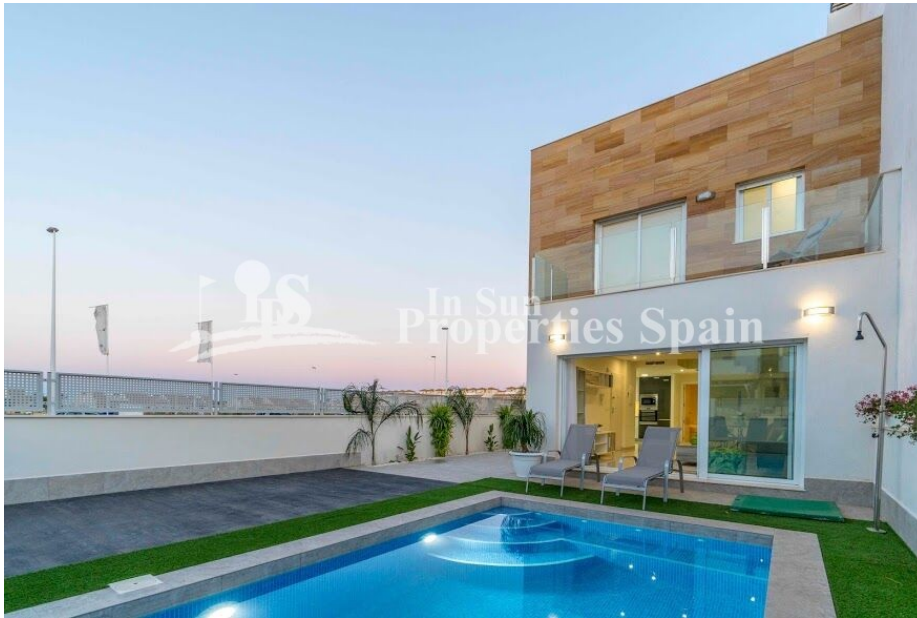




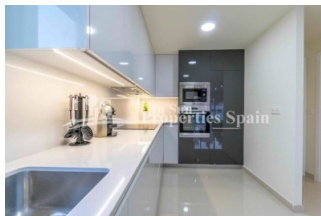
REF: # 7001

COSTA MURCIA (SAN PEDRO DEL PINATAR)



#### INFO

PRECIO:	219.000 €
TIPO:	Villa
CIUDAD:	Costa Murcia (San Pedro del Pinatar)
HABITACIONES:	3
Baños:	3
Construidos ( m2 ):	115
Parcela ( m2 ):	180
Terraza ( m2 ):	35
Años:	
Planta:	-
MENSAJE	-



#### DESCRIPCION

New Build Quad Villas located just 500m from the centre of LO PAGAN and only 3km FROM THE BEACH OF EL MOJON. 115m2 Villas set on a plot of 180m2 with private 5x3 swimming pool and 35m2 sunny solarium. To the ground floor you have an open plan living concept incorporating the furnished kitchen (included are whitegoods, oven, vitroceramic hob and extractor. Washing machine, dishwasher, fridge-freezer and microwave) with the living and dining space. There is a bedroom and bathroom on the ground floor also. To the first floor you have two further bedrooms and 2 bathrooms. All bathrooms have underfloor heating and there are electric shutters to the master bedroom and living room. 80l aerothermic water heater and pre-installation of AC. Lo Pagan, famous for its mudbaths is situated on the north shore of the Mar Menor and has merged with San Pedro del Pinatar to become one big town. It has a beautiful beach, promenade and small marina. The location of these Villas offers something for everyone; For shopping you are just over 5 minutes from Dos Mares commercial centre and for Golf enthusiasts you are just 15 minutes from Lo Romero Golf. Just 30 minutes from Corvera

Airport.



<b>ESTILO</b> <ul style="list-style-type: none"><li>• Moderno</li><li>• Contemporaneo</li></ul>	<b>VISTAS</b> <ul style="list-style-type: none"><li>• Panoramico</li></ul>	<b>AIRE ACONDICIONADO</b> <ul style="list-style-type: none"><li>• Central</li></ul>	<b>DISTANCIA A :</b> <div>Playa : 3 Km</div> <div>Aeropuerto: 40 Km</div> <div>Ciudad : 500 m</div>
<b>ORIENTACION</b> <div>Sur East West</div>	<b>AMUEBLADO</b> <ul style="list-style-type: none"><li>• Sin amueblar</li></ul>	<b>PARKING NO. DE COCHES</b> <div>: 1</div>	<b>SUELO</b> <ul style="list-style-type: none"><li>• Azulejos</li><li>• Piedra</li></ul>
<b>COCINA</b> <ul style="list-style-type: none"><li>• Cocina abierta</li><li>• Cocina equipada</li><li>• Granito</li></ul>	<b>JARDÍN Y TERRAZAS</b> <ul style="list-style-type: none"><li>• Terraza abierta</li><li>• Muros de piedra</li><li>• Jardín privado</li></ul>	<b>EXTRA</b> <ul style="list-style-type: none"><li>• Armarios empotrados</li><li>• Puerta de seguridad</li><li>• Doble cristal</li></ul>	

















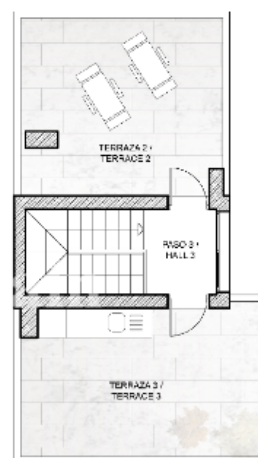
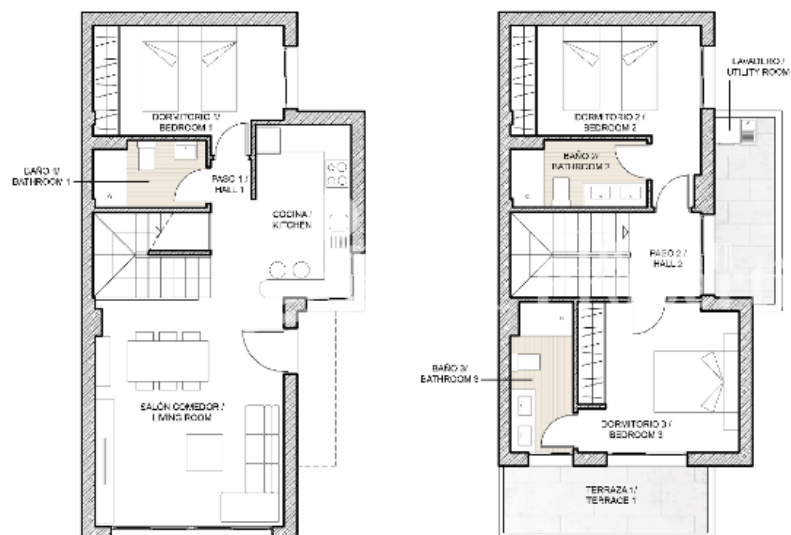












Planta Solarium / Solarium Floor  
Superficies útiles / Useful surface





**"OUR EXPERIENCE IS YOUR GUARANTEE"**