



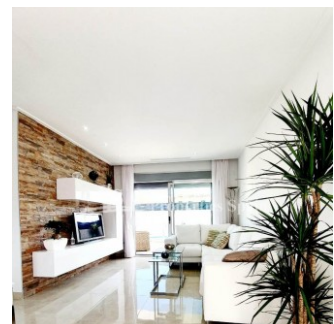
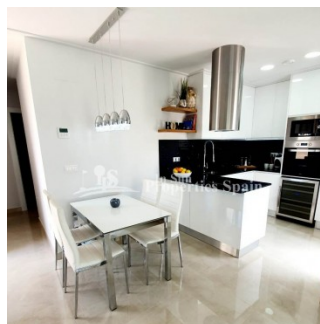
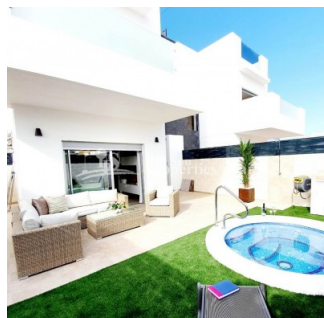
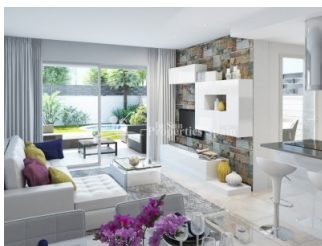
REF: # 6674

QUESADA-ROJALES (CIUDAD QUESADA)



INFO

PRECIO:	195.000 €
TIPO:	Apartamento
CIUDAD:	Quesada-Rojales (Ciudad Quesada)
HABITACIONES:	2
Baños:	2
Construidos (m2):	75
Parcela (m2):	-
Terraza (m2):	70
Años:	
Planta:	-
MENSAJE	-

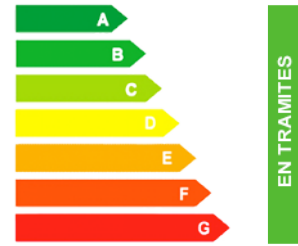


DESCRIPCION

A development of 8 new Apartments (ground floor/top floor Bungalows) in the residential area of Lo Marabu, CIUDAD QUESADA/DONA PEPA. Close to the sea and inside the Natural Park of the Lagoons of La Mata. The 70m2 Apartments are set out as Ground floor with private 60'55m2 (min) garden or Top floor with private 70'05m2 solarium. They boast 2 bedrooms, 2 bathrooms and are of a modern open plan layout. Qualities include; air conditioning installation, bathrooms furnished with screens, electric shutters, water softener, built-in mirrored cabinets, kitchens furnished with black and white countertops, design extractor hood, aerothermal , double fluid ventilation system, floor and tiles of choice, video intercom, armored entrance door, private parking, pre installation of awnings, interior and exterior lighting. The residential has a community

swimming pool and there is the option of adding a private Jacuzzi at an additional cost. Private parking also included. You are walking distance to a number of supermarkets, cafes, restaurants and shops. Ciudad Quesada is located approximately 8Km inland from the Costa Blanca at Guardamar de la Segura. Alicante and Murcia airports are both approximately 40Km away and the nearest beach is within 10 minutes drive. The town centre of Ciudad Quesada is well provided with shops, bars, restaurants, a golf course and its own water park. There are many championship golf courses to choose from: Villamartin, Las Ramblas and Campoamor are the closest. There are many more within an hour's drive. All making this your perfect home in the sun! Approx 30 minute drive and Alicante Airport. Delivery March to July 2021-3 Apartments with "KEY READY"

CERTIFICADO ENERGETICO



ESTILO <ul style="list-style-type: none">• Moderno• Contemporaneo	AIRE ACONDICIONADO <ul style="list-style-type: none">• Central	DISTANCIA A : <div>Playa : 9 Km</div> <div>Aeropuerto: 30 Km</div> <div>Ciudad : 1 Km</div>	ORIENTACION <div>Sur East West</div>
AMUEBLADO <ul style="list-style-type: none">• Sin amueblar	PARKING NO. DE COCHES <div>: 1</div>	SUELO <ul style="list-style-type: none">• Azulejos• Piedra	COCINA <ul style="list-style-type: none">• Cocina abierta• Cocina equipada
JARDÍN Y TERRAZAS <ul style="list-style-type: none">• Terraza cubierta• Terraza abierta• Luces exteriores• Muros de piedra• Jardín privado• Jardín comunitario	EXTRA <ul style="list-style-type: none">• Armarios empotrados• Puerta de seguridad• Doble cristal		







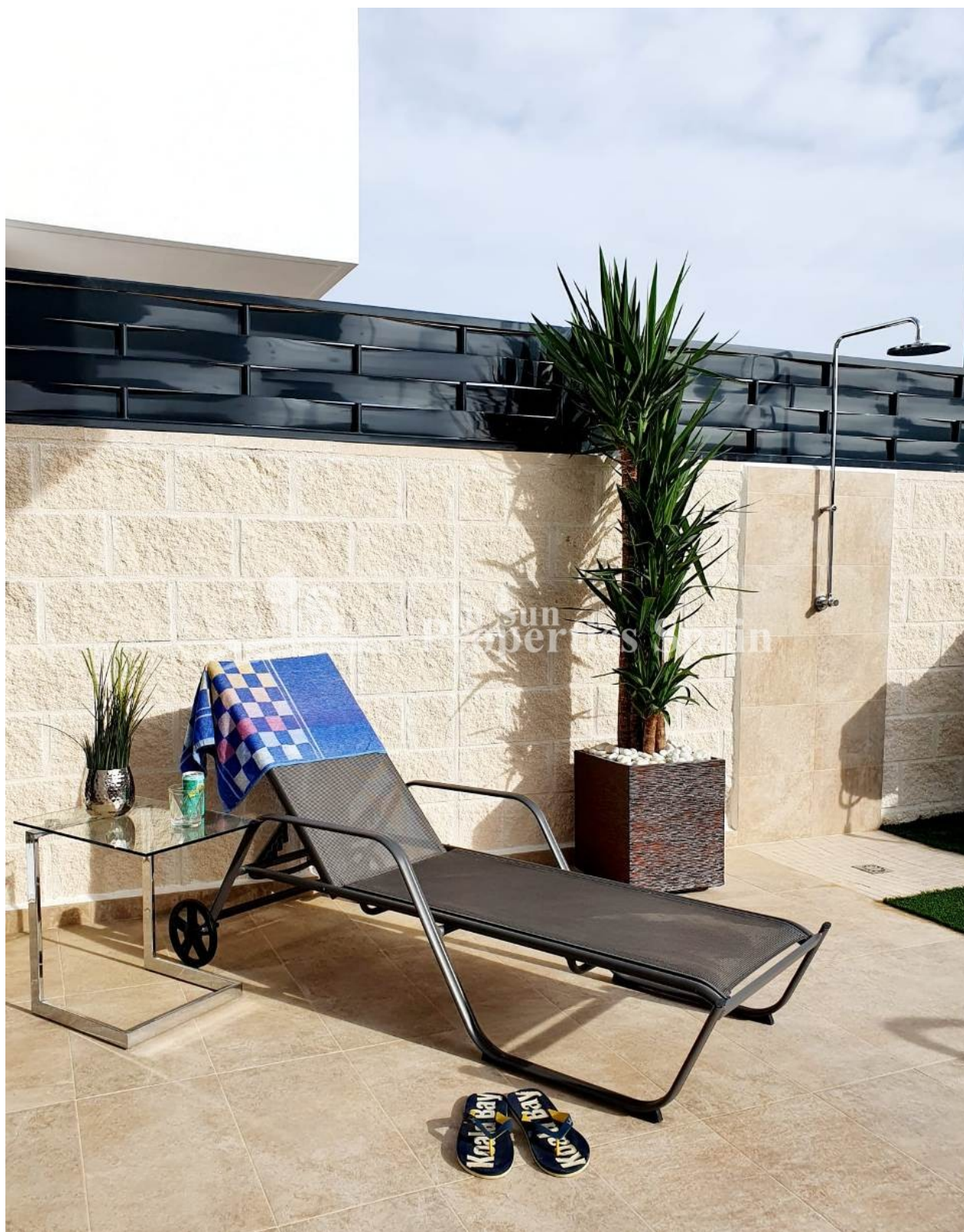






















"OUR EXPERIENCE IS YOUR GUARANTEE"