



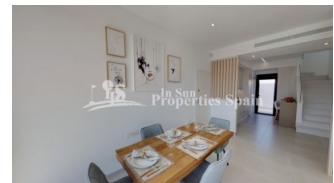
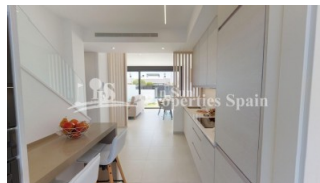
REF: # 6380

COSTA MURCIA (SAN PEDRO DEL PINATAR)



INFO

PRECIO:	329.950 €
TIPO:	Villa
CIUDAD:	Costa Murcia (San Pedro del Pinatar)
HABITACIONES:	3
Baños:	3
Construidos (m2):	128
Parcela (m2):	190
Terraza (m2):	52
Años:	
Planta:	-
MENSAJE	-



DESCRIPCION

New release of the popular premium Villas in SAN PEDRO DEL PINATAR, 600m/8 minutes walk from the beach. These 3 bedroom, 3 bathroom homes of 128m2 build are on minimum 190m2 plots and set in a nice residential area. Each with their own private pool, 52m2 garden and garage. Just 700m from the beaches. These off plan villas will have 2 levels and comprise of a large spacious open plan lounge with dining area and separate kitchen which comes fitted with modern design wall and base units equipped with Hob, oven and extractor fan. The 3 double bedrooms all come with fitted wardrobes and both first floor models have private bathrooms, there is also a family bathroom and utility room on the ground floor. Outside the property a generous garden with drive leading to a garage plus large patio areas offering lots of 'alfresco dining' options for an outdoor kitchen (next to the pool area), a private pool. The properties also come with installed air-con, kitchen appliances and pool cascade. Optional solarium (+15,500€) This 'exclusive' development off private homes are situated in a residential area – close to all amenities(8min walk), park areas, the beach (8min walk), bars, shops and restaurants. The Mar Menor and all the facilities it has to offer is just

a short 10 minute walk away, there are many golf courses nearby. This 'exclusive' development of private homes are situated in a residential area – close to all amenities, walking distance to park areas, the beach, bars, shops and restaurants.



ESTILO <ul style="list-style-type: none">• Moderno• Contemporaneo	VISTAS <ul style="list-style-type: none">• Panoramico	DISTANCIA A : <div>Playa : 500 m</div> <div>Aeropuerto: 20 Km</div> <div>Ciudad : 1 Km</div>	ORIENTACION <div>Sur East West</div>
AMUEBLADO <ul style="list-style-type: none">• Sin amueblar	PARKING NO. DE COCHES <div>Garage no. de coches : 1</div>	SUELO <ul style="list-style-type: none">• Azulejos• Piedra	COCINA <ul style="list-style-type: none">• Cocina abierta• Cocina equipada
JARDÍN Y TERRAZAS <ul style="list-style-type: none">• Terraza cubierta• Terraza abierta• Jardín privado	EXTRA <ul style="list-style-type: none">• Armarios empotrados• Puerta de seguridad• Doble cristal		





















"OUR EXPERIENCE IS YOUR GUARANTEE"