



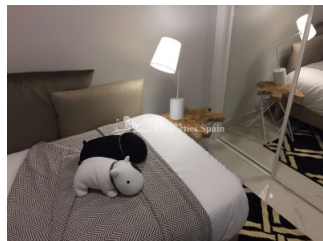
REF: # 4526

ORIHUELA COSTA (GUARDAMAR)



INFO

PRECIO:	155.000 €
TIPO:	Apartamento
CIUDAD:	Orihuela Costa (Guardamar)
HABITACIONES:	2
Baños:	2
Construidos (m2):	85
Parcela (m2):	-
Terraza (m2):	-
Años:	
Planta:	-
MENSAJE	-



DESCRIPCION

Situated in privileged surroundings, opposite La Laguna de La Mata nature reserve in EL RASO, GUARDAMAR DEL SEGURA is this KEY IN HAND residential development of 29 bungalows, 84-100m2, built in a modern style. This is a private urbanization with spacious green areas and communal swimming pool. Ground floor bungalows with 2 bedrooms, 2 bathrooms and 12-118m2 garden or first floor bungalows with 64m2 roof solarium. The layout is of a modern contemporary style, open plan, allowing for plenty of light. Featuring lounge/dining area, modern kitchen, 2 bedrooms and 2 bathrooms. The development also offers a lovely community gardens. Prices include; pre-installation of AC, Electric heated flooring to the bathrooms, parking and storage room. GROUND FLOOR from €155,000 and TOP FLOOR with SOLARIUM from €175,000. Close to all kind of facilities and to the beach in Guardamar. El Raso is in the town of Guardamar del Segura, north of Torrevieja, a few kilometers inland, next to the salt lake. Because of its location, the temperature is around the year a few degrees warmer than

on the coast. Driving time to Torrevieja, about 15 minutes, to Alicante airport about 35 minutes. There are restaurants within a short walking distance. Multiple supermarkets within a short driving distance.



ESTILO <ul style="list-style-type: none">• Moderno• Contemporaneo	VISTAS <ul style="list-style-type: none">• Panoramico	DISTANCIA A : <div>Playa : 3 Km</div> <div>Aeropuerto: 50 Km</div> <div>Ciudad : 1 Km</div>	ORIENTACION <div>Sur East West</div>
AMUEBLADO <ul style="list-style-type: none">• Sin amueblar	PARKING NO. DE COCHES <div>: 1</div>	SUELO <ul style="list-style-type: none">• Azulejos• Piedra	COCINA <ul style="list-style-type: none">• Cocina abierta• Cocina equipada• Granito
JARDÍN Y TERRAZAS <ul style="list-style-type: none">• Terraza cubierta• Terraza abierta• Paisajista• Jardín privado• Jardín comunitario	EXTRA <ul style="list-style-type: none">• Armarios empotrados• Puerta de seguridad• Doble cristal		















"OUR EXPERIENCE IS YOUR GUARANTEE"