



REF: # 4472

ORIHUELA COSTA (SAN PEDRO DEL PINTAR)



INFO

PRECIO: 265.950 €

TIPO: Villa

CIUDAD: Orihuela
Costa (San
Pedro del
Pintar)

HABITACIONES: 3

Baños: 2

Construidos (m2): 105

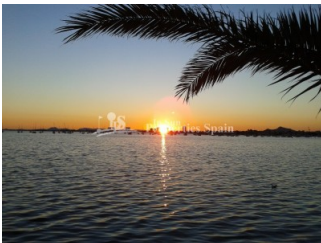
Parcela (m2): 249

Terraza (m2): -

Años:

Planta: -

MENSAJE -



DESCRIPCION

QUICK 6 month build time of these superb 3 bedroom Villas (4 bed option available) in SAN PEDRO DEL PINATAR offer private pool and are located close to the local facilities, beaches and golf courses. Internally, they offer an impressive open plan living space with high ceilings, finished with top quality floor tiles. The front door leads into the open plan living area, dining room and kitchen with feature breakfast bar – perfect for those “tapas” moments throughout the day. Enjoy the natural sun light with the oversized front windows allowing masses of light inside. To the rear of the kitchen is a bathroom with basin and shower with a corridor leading into the bedroom area. This incorporates three good sized bedrooms all have fitted wardrobes and large sliding doors to access the large terrace outside. The master bedroom has an ensuite shower room. Outside the villa – a large tiled area with private swimming pool and off road parking. Steps to the side of the property give you access to the large rooftop solarium with feature glass front

section. Lo Pagán is a district from San Pedro del Pinatar, located in the north of Mar Menor, in Costa Cálida. Although traditionally it has been considered a touristic area, more and more people are moving here, attracted by the pleasant winter weather. The benefits of the mud baths, typical of the region, or the calm waters of the Mar Menor, have favored the growth of Lo Pagán, which currently has all kind of amenities. Among its beaches include La Puntica or Los Barros. In addition, it has an excellent location, just 5 minutes from the Commercial Center Dos Mares, and 10 minutes from San Javier airport.

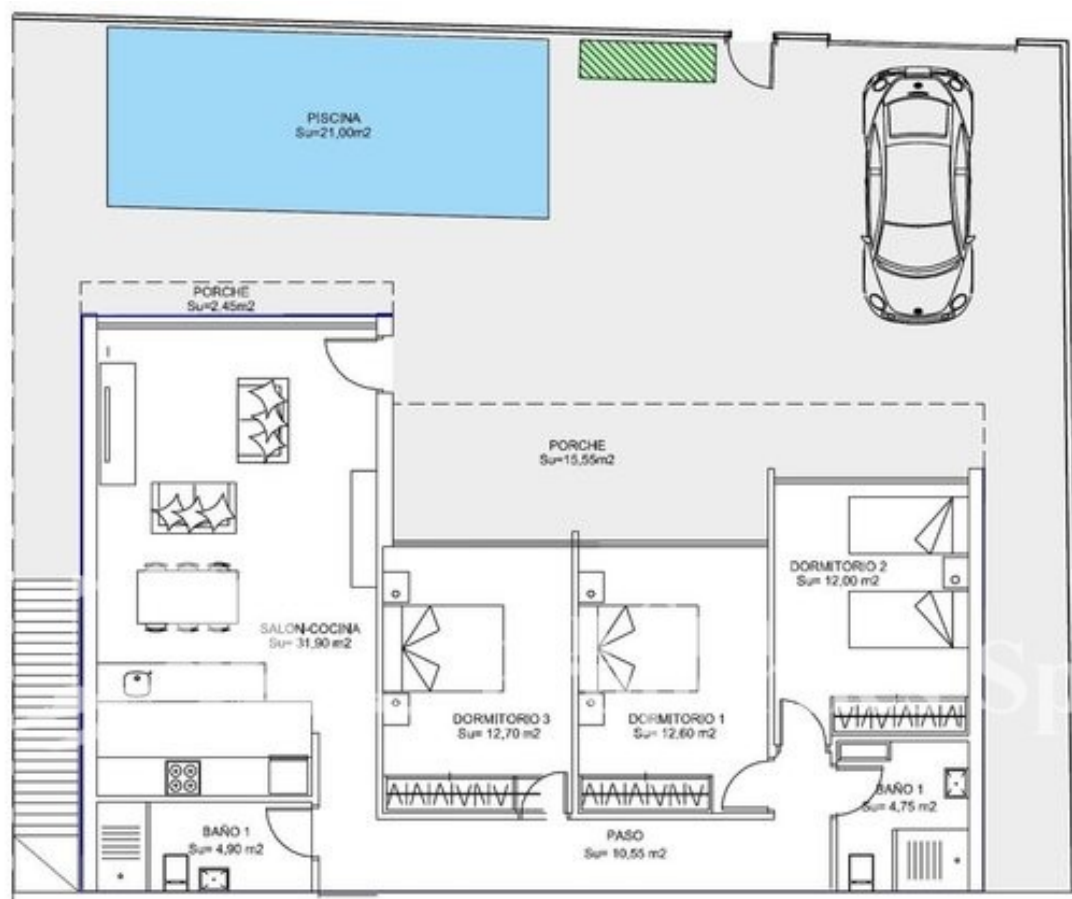


ESTILO <ul style="list-style-type: none">• Moderno• Contemporaneo	VISTAS <ul style="list-style-type: none">• Panoramico	DISTANCIA A : <div>Playa : 1 Km</div> <div>Aeropuerto: 20 Km</div> <div>Ciudad : 1 Km</div>	ORIENTACION <div>Sur East West</div>
AMUEBLADO <ul style="list-style-type: none">• Sin amueblar	PARKING NO. DE COCHES <div>: 1</div>	SUELO <ul style="list-style-type: none">• Azulejos• Piedra	COCINA <ul style="list-style-type: none">• Cocina abierta• Cocina equipada• Granito
JARDÍN Y TERRAZAS <ul style="list-style-type: none">• Terraza cubierta• Terraza abierta• Paisajista• Muros de piedra• Jardín privado	EXTRA <ul style="list-style-type: none">• Armarios empotrados• Puerta de seguridad• Doble cristal		



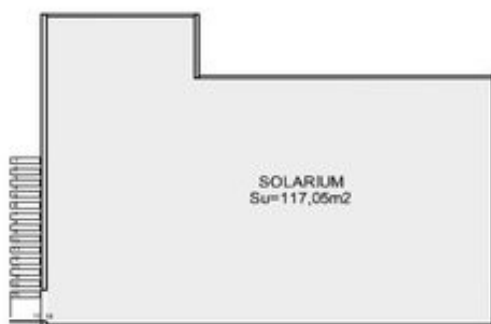






PARCELA 4

PLOT SIZE	238.54 M2
BUILD SIZE	104.75 M2
ROOF SOLARIUM	117.05 M2







"OUR EXPERIENCE IS YOUR GUARANTEE"