



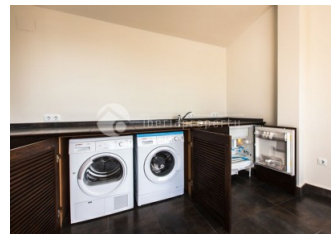
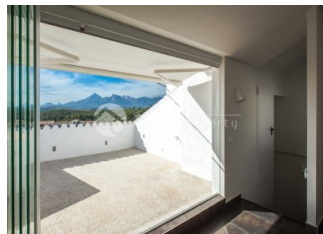
REF: # 3229

ALTEA (ALTEA LA VELLA)



#### INFO

PRECIO:	645.000 €
TIPO:	Adosado
CIUDAD:	Altea (Altea La Vella)
HABITACIONES:	3
Baños:	3
Construidos ( m2 ):	240
Parcela ( m2 ):	-
Terraza ( m2 ):	-
Años:	2012
Planta:	3
MENSAJE	-



#### DESCRIPCION

This modern townhouse in the pretty town of Altea la Vella, has been designed according to the German building standards and was completed in 2012. The 3-level building with attic has the private garage next to the entrance and the Spanish patio/courtyard on the same floor. On the first floor are the 3 bedrooms with built in closets and their with bathroom en-suite. On the second floor is the spacious living area with log-fireplace, open plan kitchen with BOSCH equipment and separate dining corner and an open terrace with street view. On the top floor is the sun lounge terrace with awnings and a summer kitchen and beautiful views. This building is a ferroconcrete construction with massive brick walls with a high-class execution and has a high insulation in walls, double glazed windows, air conditioning, real oak parquet floor in bedrooms, oil-fired central heating with radiators, solar energy and much more which we will show you during the visit. Next to the main house with a possibility to make a connection between the two, is an independent office of 60 m2 with kitchenette and bathroom designed in the same style and use of materials. A very unique house for a special

client.

CERTIFICADO ENERGETICO



<b>ESTILO</b> <ul style="list-style-type: none"><li>• Moderno</li><li>• Contemporaneo</li></ul>	<b>AIRE ACONDICIONADO</b> <ul style="list-style-type: none"><li>• Comedor</li><li>• Habitaciones</li></ul>	<b>DISTANCIA A :</b> <div>Playa : 1 Km</div> <div>Aeropuerto: 50 Km</div> <div>Ciudad : 100 m</div>	<b>ORIENTACION</b> <div>Sur oeste</div>
<b>AMUEBLADO</b> <ul style="list-style-type: none"><li>• Sin amueblar</li></ul>	<b>PARKING NO. DE COCHES</b> <div>Garage no. de coches : 1</div>	<b>AREAS</b> <ul style="list-style-type: none"><li>• Baño en dormitorio</li></ul>	<b>SUELO</b> <ul style="list-style-type: none"><li>• Madera</li><li>• Piedra</li></ul>
<b>COCINA</b> <ul style="list-style-type: none"><li>• Cocina abierta</li><li>• Cocina equipada</li><li>• Granito</li></ul>	<b>JARDÍN Y TERRAZAS</b> <ul style="list-style-type: none"><li>• Terraza cubierta</li><li>• Terraza abierta</li><li>• Cocina exterior</li></ul>	<b>CALEFACION</b> <ul style="list-style-type: none"><li>• Gasoil</li><li>• Radiadores</li><li>• Chimenea</li></ul>	<b>EXTRA</b> <ul style="list-style-type: none"><li>• Armarios empotrados</li><li>• Puerta de seguridad</li><li>• Doble cristal</li><li>• Videocamara en puerta</li><li>• Lavandería</li></ul>



































***"OUR EXPERIENCE IS YOUR GUARANTEE"***