



REF: # 10722

ROJALES (DONA PEPA)



INFO

PRECIO: 617.090 €

TIPO: Villa

CIUDAD: Rojales
(Dona Pepa)

HABITACIONES: 3

Baños: 2

Construidos (m2): 109

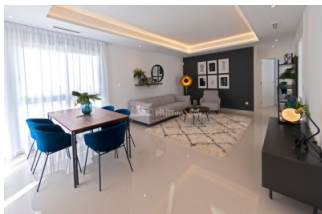
Parcela (m2): 446

Terraza (m2): 137

Años:

Planta: 1

MENSAJE -



DESCRIPCION

FANTASTIC MEDITERRANEAN STYLE VILLA IN DONA PEPA, CUIDAD QUESADA - with private pool and garden. Villa vedra, characterized by it's colonial Mediterranean style, contains 3 bedrooms and the possibility of building a 4th bedrooms with bathroom included. This style of property contains a pérgola in the solárium with beams that gives that Mediterranean touch. This 147m2 Villa consists of 3 bedrooms, 2 bathrooms, 37m2 terrace, 100m2 solarium and a large 446 m2 private garden Located in the urbanization Doña Pepa, equipped with all necessary services as shopping centers, medical center, pharmacies, golf courses, etc. Ciudad Quesada has a lot of green areas, parks with natural pine trees and spectacular views of the sea and the "Laguna de La Mata". It is a place where Europeans live all year round because of its developed infrastructure that provides all the amenities you would require. For golf lovers the closest courses are the La Marquesa Golf and the La Finca Golf Course in Algorfa just 10km drive away. Others nearby include Las Colinas Golf and Country Club, Vistabella Golf and Villamartin Golf to name a few. The Villamartin Golf Course is now one of

the most recognised golf courses on the Costa Blanca. There are shopping centers nearby, the Habaneras shopping centre in Torrevieja and only 20 minutes drive there is “La Zenia Boulevard” the largest shopping centre in the Alicante region. Alicante Airport is 35 mins (50km) drive away and Murcia (Corvera) Airport is 55 minutes (75km).



ESTILO <ul style="list-style-type: none">Mediterraneo	AIRE ACONDICIONADO <ul style="list-style-type: none">Central	DISTANCIA A : <div>Playa : 7 Km</div> <div>Aeropuerto: 50 Km</div> <div>Ciudad : 2 Km</div>	AMUEBLADO <ul style="list-style-type: none">Sin amueblar
PARKING NO. DE COCHES <div>: 1</div>	AREAS <ul style="list-style-type: none">Baño en dormitorio	SUELO <ul style="list-style-type: none">AzulejosPiedra	COCINA <ul style="list-style-type: none">Cocina abierta
JARDÍN Y TERRAZAS <ul style="list-style-type: none">PaisajistaJardín privado	EXTRA <ul style="list-style-type: none">Armarios empotradosAlarmaPuerta de seguridadDoble cristal		

PROPERTY GALLERY

















"OUR EXPERIENCE IS YOUR GUARANTEE"