



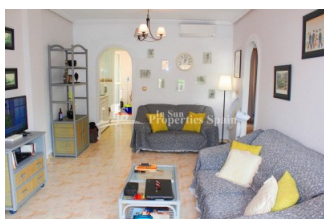
REF: # 8922

ORIHUELA COSTA (VILLAMARTIN GOLF )



#### INFO

PRECIO:	77.999 €
TIPO:	Apartamento
CIUDAD:	Orihuela Costa (Villamartin Golf )
HABITACIONES:	2
Baños:	1
Construidos ( m2 ):	73
Parcela ( m2 ):	-
Terraza ( m2 ):	26
Años:	-
Planta:	-
MENSAJE	-



#### DESCRIPCION

Close to Villamartin Plaza and Golf Course you will find this Ground Floor Apartment in Urb. PINADA GOLF. This 72m2 Apartment boasts 12m2 front terrace and 14m2 private patio. Internally the property offers a nice living space with lounge/dining area, separate kitchen and utility room. There are 2 good size bedrooms with fitted wardrobes and a bathroom. There is access to the communal pool and the potential for off street parking. Villamartin offers a wide range of services. For over 40 years it has been a golf tourist attraction and as it is expected from a residential complex of this standard all services are fully developed. The area is also known to have one of the healthiest climates in the world. Villamartin is also very close to renowned high standard international school El Limonar and the famous outdoor La Zenia Boulevard shopping and restaurant centre, the largest of its kind in southern Spain- shopping heaven!! There are many commercial centers including the well know Villamartin Plaza and La Fuente Centre along with many restaurants,

fashion shops, supermarkets, banks, pharmacies etc. Villamartin was built round one of the most prestigious golf courses on the Costa Blanca- Villamartín Golf Club- it is home to a Cosmopolitan and International community. Just a short distance away you can find 3 other golf courses such as Las Ramblas, Campoamor and La Finca. 3km from some of the best beaches in the region, open weekly markets, cinemas etc. Villamartín is approximately 50 minutes from Alicante Airport and 45 minutes from Murcia airport. By Train there are connections Madrid- Alicante (2:30 h) AVE Madrid-Murcia & Barcelona-Alicante (4.5 h)



ESTILO	VISTAS	AIRE ACONDICIONADO	DISTANCIA A :
<ul style="list-style-type: none"> <li>Mediterraneo</li> </ul>	<ul style="list-style-type: none"> <li>Panoramico</li> </ul>	<ul style="list-style-type: none"> <li>Comedor</li> <li>Habitaciones</li> </ul>	<div>Playa : 4 Km</div> <div>Aeropuerto: 40 Km</div> <div>Ciudad : 2 Km</div>
ORIENTACION	AMUEBLADO	TASAS	SUELO
<div>Sur este</div>	<ul style="list-style-type: none"> <li>Amueblado</li> </ul>	<div>Comunidad : 270 €</div> <div>I.B.I : 200 €</div>	<ul style="list-style-type: none"> <li>Azulejos</li> </ul>
COCINA	JARDÍN Y TERRAZAS	EXTRA	CERTIFICADO ENERGETICO
<ul style="list-style-type: none"> <li>Cocina cerrada</li> <li>Cocina equipada</li> <li>Granito</li> </ul>	<ul style="list-style-type: none"> <li>Terraza cubierta</li> <li>Muros de piedra</li> <li>Jardín comunitario</li> </ul>	<ul style="list-style-type: none"> <li>Armarios empotrados</li> <li>Puerta de seguridad</li> <li>Doble cristal</li> <li>Satellite TV</li> </ul>	

"OUR EXPERIENCE IS YOUR GUARANTEE"