



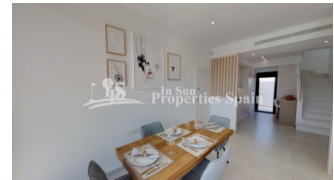
REF: # 6380

COSTA MURCIA (SAN PEDRO DEL PINATAR)



#### INFO

PRECIO:	329.950 €
TIPO:	Villa
CIUDAD:	Costa Murcia (San Pedro del Pinatar)
HABITACIONES:	3
Baños:	3
Construidos ( m2 ):	128
Parcela ( m2 ):	190
Terraza ( m2 ):	52
Años:	
Planta:	-
MENSAJE	-



#### DESCRIPCION

New release of the popular premium Villas in SAN PEDRO DEL PINATAR, 600m/8 minutes walk from the beach. These 3 bedroom, 3 bathroom homes of 128m2 build are on minimum 190m2 plots and set in a nice residential area. Each with their own private pool, 52m2 garden and garage. Just 700m from the beaches. These off plan villas will have 2 levels and comprise of a large spacious open plan lounge with dining area and separate kitchen which comes fitted with modern design wall and base units equipped with Hob, oven and extractor fan. The 3 double bedrooms all come with fitted wardrobes and both first floor models have private bathrooms, there is also a family bathroom and utility room on the ground floor. Outside the property a generous garden with drive leading to a garage plus large patio areas offering lots of 'alfresco dining' options for an outdoor kitchen (next to the pool area), a private pool. The properties also come with installed air-con, kitchen appliances and pool cascade. Optional solarium (+15,500€) This 'exclusive' development off private homes are situated in a residential area – close to all amenities(8min walk), park areas, the beach (8min walk), bars, shops

and restaurants. The Mar Menor and all the facilities it has to offer is just a short 10 minute walk away, there are many golf courses nearby. This 'exclusive' development of private homes are situated in a residential area – close to all amenities, walking distance to park areas, the beach, bars, shops and restaurants.



<b>ESTILO</b> <ul style="list-style-type: none"><li>Moderno</li><li>Contemporaneo</li></ul>	<b>VISTAS</b> <ul style="list-style-type: none"><li>Panoramico</li></ul>	<b>DISTANCIA A :</b> <div>Playa : 500 m</div> <div>Aeropuerto: 20 Km</div> <div>Ciudad : 1 Km</div>	<b>ORIENTACION</b> <div>Sur East West</div>
<b>AMUEBLADO</b> <ul style="list-style-type: none"><li>Sin amueblar</li></ul>	<b>PARKING NO. DE COCHES</b> <div>Garage no. de coches : 1</div>	<b>SUELO</b> <ul style="list-style-type: none"><li>Azulejos</li><li>Piedra</li></ul>	<b>COCINA</b> <ul style="list-style-type: none"><li>Cocina abierta</li><li>Cocina equipada</li></ul>
<b>JARDÍN Y TERRAZAS</b> <ul style="list-style-type: none"><li>Terraza cubierta</li><li>Terraza abierta</li><li>Jardín privado</li></ul>	<b>EXTRA</b> <ul style="list-style-type: none"><li>Armarios empotrados</li><li>Puerta de seguridad</li><li>Doble cristal</li></ul>	<b>CERTIFICADO ENERGETICO</b> <div></div>	

**"OUR EXPERIENCE IS YOUR GUARANTEE"**