



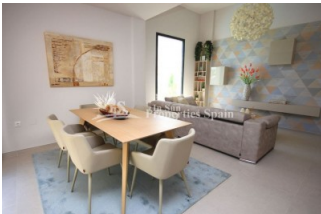
REF: # 4681

QUESADA-ROJALES (DONA PEPA)



#### INFO

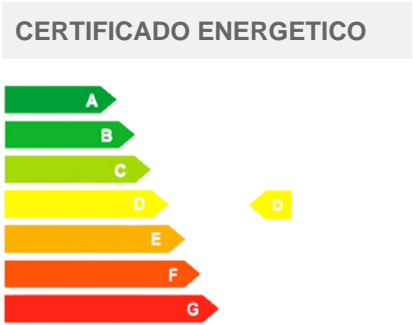
PRECIO:	385.000 €
TIPO:	Villa
CIUDAD:	Quesada-Rojales (Dona Pepa)
HABITACIONES:	3
Baños:	2
Construidos ( m2 ):	120
Parcela ( m2 ):	283
Terraza ( m2 ):	-
Años:	
Planta:	-
MENSAJE	-



#### DESCRIPCION

From a well renowned builder, this is a KEY READY 120m2, 3 bedroom, 2 bathroom Villa at Eivissa Residential in Dona Pepa, ROJALES. Set within a 283m2 plot with private 3.5x7m swimming pool and 75m2 basement. The development is located only 25 minutes from Alicante airport, 30 minutes from the centre of Alicante, less than 5 minutes from shops and restaurants and just 5 km driving distance from the beautiful beaches of Guardamar del Segura. Comprising of 10 villas with 2 or 3 bedrooms, terrace, solarium, individual pool and Mediterranean style garden. These houses are equipped with the latest in Smart Home technology 3.0. and can be characterized by its privacy, security and exclusive design. Doña Pepa is a modern urbanisation belonging to Ciudad Quesada and has all the amenities which include supermarkets, bars, hotel and shops as well as a bank. Ciudad Quesada town centre is a ten minute walk from Doña Pepa. In Ciudad Quesada itself you will find international supermarkets, restaurants, banks, a medical centre as well as a water park. The property is ideally located if you are a golf

enthusiast, with La Marquesqa Golf Club just a five minute drive away. The nearest beaches are at Guardamar/Campomar and La Mata ten minutes drive away.



<b>ESTILO</b> <ul style="list-style-type: none"> <li>Moderno</li> <li>Contemporaneo</li> </ul>	<b>DISTANCIA A :</b> <div>Playa : 7 Km</div> <div>Aeropuerto: 30 Km</div> <div>Ciudad : 1 Km</div>	<b>ORIENTACION</b> <div>Sur East West</div>	<b>AMUEBLADO</b> <ul style="list-style-type: none"> <li>Sin amueblar</li> </ul>
<b>PARKING NO. DE COCHES</b> <div>: 1</div>	<b>SUELO</b> <ul style="list-style-type: none"> <li>Azulejos</li> <li>Piedra</li> </ul>	<b>COCINA</b> <ul style="list-style-type: none"> <li>Cocina abierta</li> <li>Cocina equipada</li> <li>Granito</li> </ul>	<b>JARDÍN Y TERRAZAS</b> <ul style="list-style-type: none"> <li>Terraza abierta</li> <li>Paisajista</li> <li>Jardín privado</li> </ul>
<b>EXTRA</b> <ul style="list-style-type: none"> <li>Armarios empotrados</li> <li>Puerta de seguridad</li> <li>Doble cristal</li> </ul>	<b>CERTIFICADO ENERGETICO</b> 		

"OUR EXPERIENCE IS YOUR GUARANTEE"