



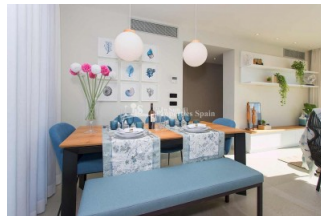
REF: # 4490

ORIHUELA COSTA (VILLAMARTIN PAU-1)



#### INFO

PRECIO:	467.000 €
TIPO:	Apartamento
CIUDAD:	Orihuela Costa (Villamartin Pau-1)
HABITACIONES:	3
Baños:	2
Construidos ( m2 ):	90
Parcela ( m2 ):	-
Terraza ( m2 ):	117
Años:	
Planta:	-
MENSAJE	429.000 €



#### DESCRIPCION

Samoa apartments are located in VILLAMARTIN urbanization surrounded by 3 iconic golf courses of the Costa Blanca, such as Villamartin Golf, Las Ramblas Golf and Las Colinas. This complex is composed by 16 apartments with 2 and 3 bedroom properties, 2 bathroom each with floor heating, air conditioning by conducts fully installed, larges picture windows, private terraces and option of garage and storage. This development also has a communal Jacuzzi and swimming pool with garden areas. The penthouses also have a spacious solarium and are equipped with private Jacuzzi, exterior shower and in built barbecue. Key features include; Key ready, South East Orientation, Floor heating and mirrors in bathrooms, Air conditioning by conducts, Private terrace, Communal swimming pool and jacuzzi. The penthouses also include; Magnificent sea views, Private Solarium, Jacuzzi, Exterior shower, Exterior Barbecue, Garage and storage room included in price and Electrical shutter in living room. PLUS Special offer until end of year;

Full installation of BALAY white good package, LED lighting AND Promo 5 (Valid until the end of the year); Furniture voucher valued in 5.000€, 5.000€ discount on property price. Just 10 minutes away from La Zenia beach and 5 minutes walking distance from Commercial Center Zenia Boulevard. It is 40 minutes from Alicante airport. This development is located in an area with many services.



<b>ESTILO</b> <ul style="list-style-type: none"> <li>Moderno</li> <li>Contemporaneo</li> </ul>	<b>VISTAS</b> <ul style="list-style-type: none"> <li>Panoramico</li> <li>Vistas al mar</li> </ul>	<b>DISTANCIA A :</b> <div>Playa : 3 Km</div> <div>Aeropuerto: 50 Km</div> <div>Ciudad : 1 Km</div>	<b>ORIENTACION</b> <div>Sur oeste</div>
<b>AMUEBLADO</b> <ul style="list-style-type: none"> <li>Sin amueblar</li> </ul>	<b>PARKING NO. DE COCHES</b> <div>Garage no. de coches : 1</div> <div>: 1</div>	<b>SUELO</b> <ul style="list-style-type: none"> <li>Azulejos</li> <li>Piedra</li> </ul>	<b>COCINA</b> <ul style="list-style-type: none"> <li>Cocina abierta</li> <li>Cocina equipada</li> <li>Granito</li> </ul>
<b>JARDÍN Y TERRAZAS</b> <ul style="list-style-type: none"> <li>Terraza cubierta</li> <li>Terraza abierta</li> <li>Palmeras</li> <li>Paisajista</li> <li>Muros de piedra</li> <li>Jardín comunitario</li> </ul>	<b>EXTRA</b> <ul style="list-style-type: none"> <li>Jacuzzi exterior</li> <li>Puerta de seguridad</li> <li>Doble cristal</li> </ul>	<b>CERTIFICADO ENERGETICO</b> <div> </div>	

**"OUR EXPERIENCE IS YOUR GUARANTEE"**