



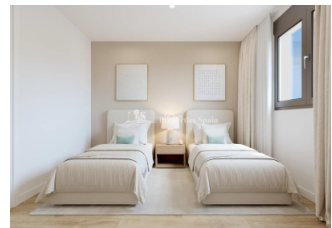
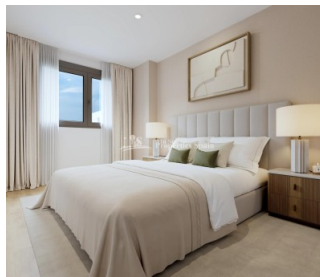
REF: # 12854

ALICANTE (ALICANTE CITY CENTRE)



INFO

| | |
|---------------------|---------------------------------|
| PRECIO: | 232.500 € |
| TIPO: | Apartamento (Penthouse) |
| CIUDAD: | Alicante (Alicante City Centre) |
| HABITACIONES: | 2 |
| Baños: | 2 |
| Construidos (m2): | 71 |
| Parcela (m2): | - |
| Terraza (m2): | 5 |
| Años: | |
| Planta: | - |
| MENSAJE | - |



DESCRIPCION

New Residential Development in Alicante with Open Views - only 2km to city centre and 6km to the Beach! Newly Built Homes in a Privileged Location in Alicante, designed to offer maximum comfort and quality of life. With 84, 2 and 3 bedroom homes, this complex is located in San Agustín - Pau II, a strategic area with all essential services within easy reach. This Wonderful Penthouse 71m2 apartment consists of 2 bedrooms, 2 bathrooms, open plan lounge/kitchen/dining area, private 5m2 terrace and parking space. The homes have been designed with a modern and efficient approach, incorporating high quality materials and sustainable technology: reinforced access door for added security, ducted air conditioning (hot and cold) installed, carpentry with thermal break and double glazing to improve thermal and acoustic insulation and

domestic hot water production by means of aerothermics, guaranteeing energy efficiency and sustainability. Residents will enjoy a modern and functional environment, with large garden areas, communal swimming pool, children's play area, parking spaces and storage rooms. In addition, its elevated location guarantees unobstructed views of the city and the surrounding natural environment. This residential complex is surrounded by a wide range of services that will make your day-to-day life easier; 9 schools and institutes in the vicinity, Supermarkets and shops, Corfu Island Shopping Centre (with shops, gyms, restaurants), Sports facilities. The excellent infrastructure of the neighbourhood guarantees comfort, security and accessibility, making it an ideal place for families and investors alike. The San Agustín neighbourhood is situated on a gentle hill, offering panoramic views of Alicante's city skyline, Mount Benacantil and the surrounding mountains. Its Mediterranean climate and proximity to green spaces and leisure areas make it an ideal place to live. The airport Alicante-Elche Airport - 14 km, the golf course 7km and the port of Alicante 5km. Alicante offers an exceptional climate, a vibrant cultural life and a first class infrastructure, making it one of the most desirable cities in Spain. This new residential development in San Agustin - Pau II combines elegant design with an unbeatable location.



| | | | |
|---|--|--|--|
| ESTILO <ul style="list-style-type: none">• Moderno• Contemporaneo | VISTAS <ul style="list-style-type: none">• Panoramico | DISTANCIA A : <div>Playa : 6 Km</div> <div>Aeropuerto: 20 Km</div> <div>Ciudad : 2 Km</div> | AMUEBLADO <ul style="list-style-type: none">• Sin amueblar |
| PARKING NO. DE COCHES <div>: 1</div> | SUELO <ul style="list-style-type: none">• Azulejos• Piedra | COCINA <ul style="list-style-type: none">• Cocina abierta | JARDÍN Y TERRAZAS <ul style="list-style-type: none">• Parque infantil• Paisajista• Vallado• Jardín comunitario |
| EXTRA <ul style="list-style-type: none">• Armarios empotrados• Alarma• Puerta de seguridad• Doble cristal | CERTIFICADO ENERGETICO <div><div><div>A</div><div>B</div><div>C</div><div>D</div><div>E</div><div>F</div><div>G</div></div><div>EN TRAMITES</div></div> | | |

"OUR EXPERIENCE IS YOUR GUARANTEE"