



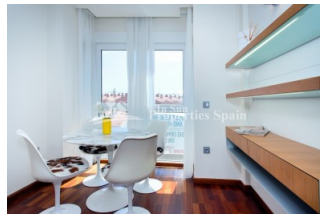
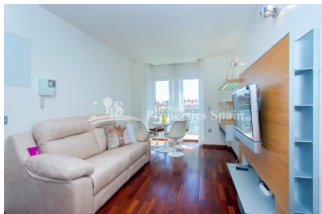
REF: # 7209

ORIHUELA COSTA (TORRE DE LA HORADADA)



INFO

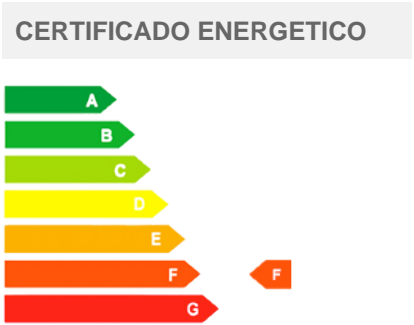
PRECIO:	180.000 €
TIPO:	Apartamento
CIUDAD:	Orihuela Costa (Torre de la Horadada)
HABITACIONES:	2
Baños:	1
Construidos (m2):	56
Parcela (m2):	-
Terraza (m2):	9
Años:	-
Planta:	2
MENSAJE	-



DESCRIPCION

We are proud to offer you this high quality apartment first line in LA TORRE DE LA HORADADA. The 56m2 apartment is on the second floor, via lift, and consists of 2 bedrooms, 1 bathroom and is of SOUTHEAST orientation. Qualities include; electric shutters, storage room, glass granite, parquet flooring, air conditioning, plus a community 9m2 terrace with amazing views to enjoy 365 days a year. This apartment would be a great opportunity for investment and rentals. Torre de la Horadada is a coastal resort located on the Southern Costa Blanca with some fine sandy beaches which are ideal for families with children who have come to spend their summer holidays. There are two airports close to Torre de la Horadada; Alicante and Murcia RMU. Torre de la Horadada is also one of the prettiest of the southern resorts with attractive coastline and seafront walks as well as a charismatic watch tower dating from the time when pirates sailed these seas. There is a lovely marina with plenty of mooring space. It is a small Spanish town with a nice square and a church. There is an array of amenities here and

for golf enthusiasts there are a number of courses nearby like Las Ramblas, Villamartin, Campoamor, Campoverde and Lo Romero.



ESTILO <ul style="list-style-type: none">ContemporaneoMediterraneo	VISTAS <ul style="list-style-type: none">PanoramicoVistas al mar	AIRE ACONDICIONADO <ul style="list-style-type: none">Central	DISTANCIA A : <div>Playa : 200 m</div> <div>Aeropuerto: 30 Km</div> <div>Ciudad : 200 m</div>
ORIENTACION <div>Sur este</div>	AMUEBLADO <ul style="list-style-type: none">Amueblado	TASAS <div>Comunidad : 350 €</div> <div>I.B.I : 400 €</div>	AREAS <ul style="list-style-type: none">Trastero
SUELO <ul style="list-style-type: none">AzulejosPiedra	COCINA <ul style="list-style-type: none">Cocina abiertaCocina equipada	JARDÍN Y TERRAZAS <ul style="list-style-type: none">Terraza abierta	EXTRA <ul style="list-style-type: none">Armarios empotradosPuerta de seguridadTrasteroAscensor























"OUR EXPERIENCE IS YOUR GUARANTEE"