



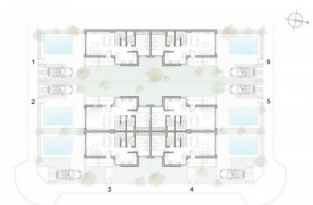
REF: # 4481

ORIHUELA COSTA (PILAR DE LA HORADADA)



#### INFO

PRECIO:	249.000 €
TIPO:	Villa (Semi detached)
CIUDAD:	Orihuela Costa (Pilar de la Horadada)
HABITACIONES:	3
Baños:	3
Construidos ( m2 ):	115
Parcela ( m2 ):	175
Terraza ( m2 ):	35
Años:	
Planta:	-
MENSAJE	-



#### DESCRIPCION

NEW residential development IN SAN PEDRO DEL PINTAR boasting 3 bedroom, 3 bathroom SEMI-DETACHED 115m2 Villas with private garden, POOL, 35m2 solarium, white goods and under floor heating to the bathrooms. Plots range from 175m2 to 180m2 and delivery is expected in December 2017. Residencial Belich is located in a BEAUTIFUL PLACE, surrounded by two seas, the Mediterranean Sea and the MAR MENOR that together with the natural park of the lagoons of SAN PEDRO and the mud baths make a truly unique location. The location is ideal to enjoy the beaches and promenades that run alongside LO PAGAN and San Pedro del Pinatar, offering the chance to enjoy the wonderful beaches and the great variety of restaurants with excellent SEA VIEWS. This area also offers a variety of sports activities, including seasonal water sports. There are also some particularly good golf courses very close by. With the airport of Murcia just a short drive away, as well as the local Thalassia Spa and shopping centre, this really is an

ideal location to start enjoying the Spanish lifestyle.

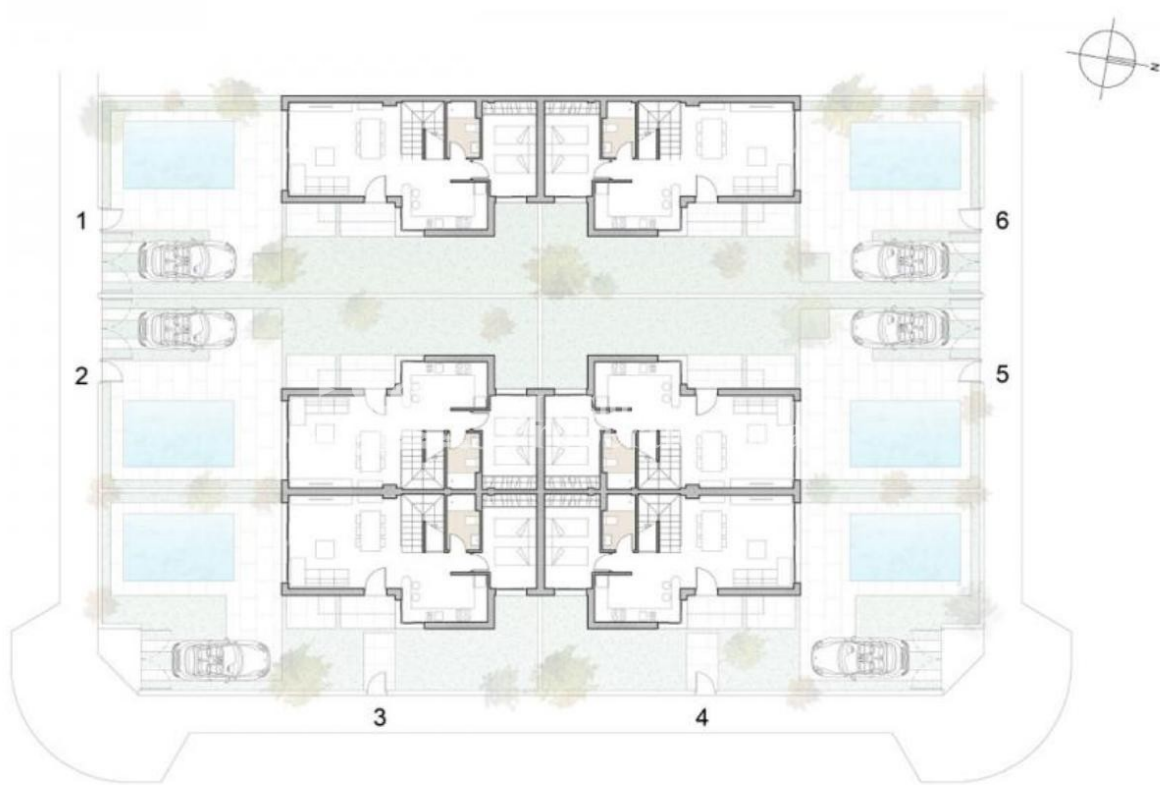


<b>ESTILO</b> <ul style="list-style-type: none"><li>• Moderno</li><li>• Contemporaneo</li></ul>	<b>VISTAS</b> <ul style="list-style-type: none"><li>• Panoramico</li><li>• Vistas al mar</li></ul>	<b>DISTANCIA A :</b> <div>Playa : 500 m</div> <div>Aeropuerto: 40 Km</div> <div>Ciudad : 1 Km</div>	<b>ORIENTACION</b> <div>Sur oeste</div>
<b>PARKING NO. DE COCHES</b> <div>: 1</div>	<b>SUELO</b> <ul style="list-style-type: none"><li>• Azulejos</li><li>• Piedra</li></ul>	<b>COCINA</b> <ul style="list-style-type: none"><li>• Cocina abierta</li><li>• Cocina equipada</li><li>• Granito</li></ul>	<b>JARDÍN Y TERRAZAS</b> <ul style="list-style-type: none"><li>• Terraza cubierta</li><li>• Terraza abierta</li><li>• Paisajista</li><li>• Jardín privado</li></ul>
<b>EXTRA</b> <ul style="list-style-type: none"><li>• Armarios empotrados</li><li>• Puerta de seguridad</li><li>• Doble cristal</li></ul>			















***"OUR EXPERIENCE IS YOUR GUARANTEE"***