



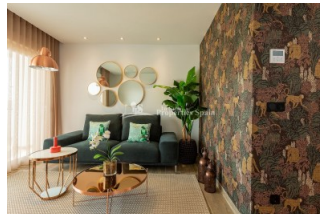
REF: # 6066

ORIHUELA COSTA (PUNTA PRIMA)



INFO

PRECIO:	255.000 €
TIPO:	Apartamento
CIUDAD:	Orihuela Costa (Punta Prima)
HABITACIONES:	3
Baños:	2
Construidos (m2):	85
Parcela (m2):	-
Terraza (m2):	20
Años:	
Planta:	-
MENSAJE	-

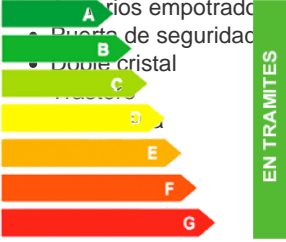


DESCRIPCION

The Bali residential complex is located in the PUNTA PRIMA urbanization (La Ceñuela) a few meters from the sea. only 30 km from the Alicante airport, 15 minutes from the Villamartín and Las Ramblas golf courses and 10 minutes from La Zenia Boulevard shopping center this area has many services. This complex has the opportunity to enjoy the Mediterranean coast in its best version. This development consists of apartments with 2 and 3 bedrooms, 2 bathrooms with under floor heating, installation of air conditioning ducts, private terraces, motorized blinds and optional private parking with storage. It also includes two singular communal swimming pools equipped with hammocks, whirlpool jets and a children's area combined with an exclusive green area for the enjoyment of residents. The penthouses and duplex include an outdoor kitchen with sink and barbecue, pergola, TV connection, outdoor shower, private Jacuzzi, solarium with wooden imitation floor combined with artificial grass. They also integrate a home automation system. Punta Prima is a residential area that is located only 5 minutes from Torrevieja

and to the best beaches in Orihuela Costa, which is able to be enjoyed most year round. It is almost perfect for those who want to live in Spain or just want to come on Holidays. It also counts on a wide selection of activities and services. It is handy for golf lovers , with in a short distance you can find 3 exceptional golf courses: Villamartín, Las Ramblas and Campoamor. It is an area with a large range of activities, but also an ideal placa to relax.



ESTILO <ul style="list-style-type: none"> Moderno Contemporaneo 	AIRE ACONDICIONADO <ul style="list-style-type: none"> Central 	DISTANCIA A : <div>Playa : 500 m</div> <div>Aeropuerto: 40 Km</div> <div>Ciudad : 500 m</div>	ORIENTACION <div>Sur East West</div>
AMUEBLADO <ul style="list-style-type: none"> Sin amueblar 	PARKING NO. DE COCHES <div>Garage no. de coches : 1</div> <div>: 1</div>	AREAS <ul style="list-style-type: none"> Trastero Baño en dormitorio 	SUELO <ul style="list-style-type: none"> Azulejos Piedra
COCINA <ul style="list-style-type: none"> Cocina abierta Cocina equipada Granito 	JARDÍN Y TERRAZAS <ul style="list-style-type: none"> Terraza cubierta Terraza abierta Arboles frutales Palmeras Parque infantil Paisajista Jardín comunitario 	CALEFACION <ul style="list-style-type: none"> Calefacion en baños 	CERTIFICADO ENERGETICO <ul style="list-style-type: none"> Jacuzzi exterior Arrios empotrados Puerta de seguridad Doble cristal Trastero 

"OUR EXPERIENCE IS YOUR GUARANTEE"