

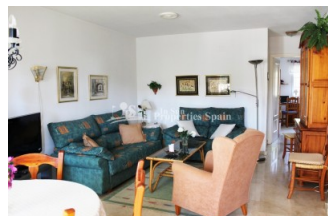


REF: # 3993

ORIHUELA COSTA (VILLAMARTIN VALENCIA)



INFO	
PRECIO:	139.900 €
TIPO:	Adosado
CIUDAD:	Orihuela Costa (Villamartin Valencia)
HABITACIONES:	3
Baños:	1
Construidos (m2):	94
Parcela (m2):	-
Terraza (m2):	35
Años:	1995
Planta:	-
MENSAJE	-

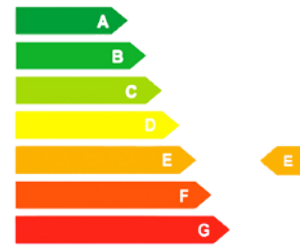


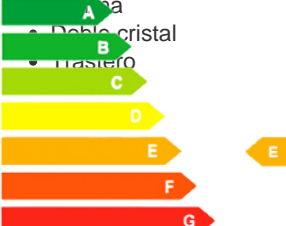
DESCRIPCION

This Spanish style south/west facing 3 bedrooms, 1 bathrooms Bungalow "LOLA" is located in VALENCIA-VILLAMARTIN Golf Course. Spacious lounge/dining area with fireplace and fully equipped American style kitchen with utility area. There are 2 bedrooms and a full bathroom on the same level. The main downstairs bedroom has doors leading to a lovely private back garden, sunny 9m2 front terrace with outside stairs leading to a 25m2 roof solarium with 1 guest bedroom, storage room and fantastic views .60 m2 private garden front and back, walking distance to VILLAMARTIN PLAZA with all amenities, 3 km to the sandy beaches of Orihuela Costa and to the new shopping center Zenia Boulevard !! Sold Fully furnished, A/C in Living area. Possibility to buy a Car KIA Rio about 45.000 km. 950.-€ "VILLAMARTIN" is a popular destination for golfers and beach lovers alike as it is only 5mins drive to the wonderful Costa Blanca beaches! It has 4 championship golf courses (Villamartin, Las Ramblas, Las Colinas, and Campoamor). Villamartin has grown rapidly in

the last 10 years with many Northern Europeans buying apartments, townhouses and villas in the area for both permanent living and holidays. Even if you are not a golfer then Villamartin has plenty to offer. One of its most famous parts is the Villamartin plaza. This is a square (or plaza!) set over two levels surrounded by bars, restaurants with food from many countries, cafes, banks and supermarkets. Especially in the Summer, the atmosphere is electric with life.

CERTIFICADO ENERGETICO



ESTILO	VISTAS	AIRE ACONDICIONADO	DISTANCIA A :
<ul style="list-style-type: none"> • Mediterraneo 	<ul style="list-style-type: none"> • Panoramico 	<ul style="list-style-type: none"> • Comedor 	Playa : 3 Km <hr/> Aeropuerto: 50 Km <hr/> Ciudad : 200 m
ORIENTACION	TASAS	AREAS	SUELO
Sur oeste <hr/>	Comunidad : 850 € <hr/> I.B.I : 233 €	<ul style="list-style-type: none"> • Trastero 	<ul style="list-style-type: none"> • Azulejos • Marmol
COCINA	JARDÍN Y TERRAZAS	CALEFACION	CERTIFICADO ENERGETICO
<ul style="list-style-type: none"> • Cocina abierta • Granito 	<ul style="list-style-type: none"> • Terraza cubierta • Terraza abierta • Luces exteriores • Riego automatico • Palmeras • Vallado • Muros de piedra • Jardín privado • Jardín comunitario 	<ul style="list-style-type: none"> • Radiadores • Chimenea 	<ul style="list-style-type: none"> • Armarios empotrados 

"OUR EXPERIENCE IS YOUR GUARANTEE"