



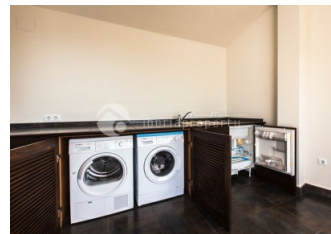
REF: # 3229

ALTEA (ALTEA LA VELLA)



INFO

PRECIO:	645.000 €
TIPO:	Adosado
CIUDAD:	Altea (Altea La Vella)
HABITACIONES:	3
Baños:	3
Construidos (m2):	240
Parcela (m2):	-
Terraza (m2):	-
Años:	2012
Planta:	3
MENSAJE	-



DESCRIPCION

This modern townhouse in the pretty town of Altea la Vella, has been designed according to the German building standards and was completed in 2012. The 3-level building with attic has the private garage next to the entrance and the Spanish patio/courtyard on the same floor. On the first floor are the 3 bedrooms with built in closets and their with bathroom en-suite. On the second floor is the spacious living area with log-fireplace, open plan kitchen with BOSCH equipment and separate dining corner and an open terrace with street view. On the top floor is the sun lounge terrace with awnings and a summer kitchen and beautiful views. This building is a ferroconcrete construction with massive brick walls with a high-class execution and has a high insulation in walls, double glazed windows, air conditioning, real oak parquet floor in bedrooms, oil-fired central heating with radiators, solar energy and much more which we will show you during the visit. Next to the main house with a possibility to make a connection between the two, is an independent office of 60 m2 with kitchenette and bathroom designed in

the same style and use of materials. A very unique house for a special client.



ESTILO <ul style="list-style-type: none">ModernoContemporaneo	AIRE ACONDICIONADO <ul style="list-style-type: none">ComedorHabitaciones	DISTANCIA A : <div>Playa : 1 Km</div> <div>Aeropuerto: 50 Km</div> <div>Ciudad : 100 m</div>	ORIENTACION <div>Sur oeste</div>
AMUEBLADO <ul style="list-style-type: none">Sin amueblar	PARKING NO. DE COCHES <div>Garage no. de coches : 1</div>	AREAS <ul style="list-style-type: none">Baño en dormitorio	SUELO <ul style="list-style-type: none">MaderaPiedra
COCINA <ul style="list-style-type: none">Cocina abiertaCocina equipadaGranito	JARDÍN Y TERRAZAS <ul style="list-style-type: none">Terraza cubiertaTerraza abiertaCocina exterior	CALEFACION <ul style="list-style-type: none">GasoilRadiadoresChimenea	CERTIFICADO ENERGETICO <ul style="list-style-type: none">Armarios empotradosBotella de seguridadDoble cristalvideocamara en puertaEscalineria <div><div>A</div><div>B</div><div>C</div><div>D</div><div>E</div><div>F</div><div>G</div></div> <div>EN TRAMITES</div>

"OUR EXPERIENCE IS YOUR GUARANTEE"